



The official  
publication  
of the members of  
Indian Electric  
Cooperative



2

## The Hydro Ax Returns

## COWBOY HATS & HARD HATS

3



4



## Linemen Say "Thanks"

# New System Improves Mapping Capabilities

Maps are a vital part of the electric utility business. But not the kind of maps you keep in the glove compartment of your car to help you keep from getting lost while on vacation. Co-op maps look like they could have been produced for aliens and written in their native language. They don't just help our employees get from one location to the next, they give them an overview of the Co-op's electrical system, section by section.

Our maps have symbols telling employees where such equipment as utility poles, meters, transformers, and reclosers are located within each section of land. They tell us where the

In November 2003, IEC began working with Electrical Systems Consultants to gather information about our electric system from the field.

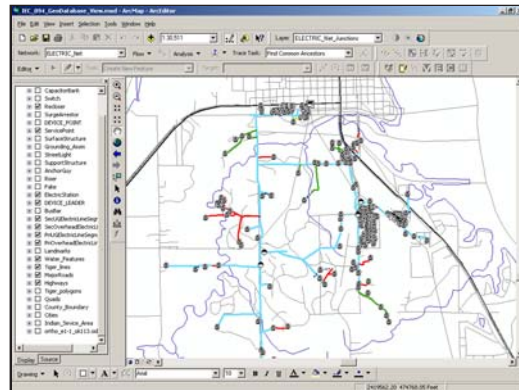
"We have men in the field using Global Positioning Satellites (GPS) technology," says Larry Tuxhorn of ESC. "They are visiting each of IEC's estimated 80,000 poles taking inventory of the equipment on those poles, and collecting each pole's GPS map coordinate." He says there are currently four men in the field, working south and east of Cleveland. He says as the weather improves more personnel will be gathering information. "Plans call for about 10 people to be in the field, gathering data," he says. Tuxhorn estimates it will take about 18 months to gather needed data from across the system. Tuxhorn says all personnel carry identification, but encourages members to call IEC at (918) 358-2514 if they want verification of an individual's identification.

"By utilizing the GPS technology, we'll be accurate to within three feet," he adds.

IEC's Manager of Engineering Jon Joyce says when the project is completed, we will be able to update our maps more frequently, and the maps will be compatible with current outage, inventory and staking software.

"Each department will be able to tailor the program's service to their individual needs," Joyce explains. "For example, the maps will be able to designate residential accounts and commercial accounts and also indicate school districts, zip code areas, recognized land marks and trustee districts."

Joyce adds this program will allow IEC to implement additional technology in the future.



power lines are and what type of lines they are. They also tell us the location of substations and each feeder coming out of those substations.

Having accurate, up-to-date information on our maps is necessary for us to continue providing reliable electric service.

By implementing new geographical information system (GIS) technology, we are going to be able to improve the accuracy of the maps, quicken the updating process, and thus make the maps an improved tool for every department of the cooperative.

# An Area to be Appreciated

by Jack Clinkscale, General Manager

My career path has taken me many places and I have lived in several states. All of these states have one thing in common: two distinct geographic regions. One side of the state is lush and green and the other side is arid with a definite lack of trees. I grew up in western Oklahoma, moved to the Texas panhandle, came back to school in west-central Oklahoma, then back to the Texas panhandle and in turn, to northeastern New Mexico, eastern Washington, western Nebraska, western Kansas, and finally, to eastern Colorado.

My family's move to Indian Electric country has been quite a pleasant change for us. We feel we have landed in a virtual paradise after enduring three years of a severe drought near Limon, Colo. We have seen more moisture since our move here in October than in the past year in Colorado. My daughter suggested they change the highway sign entering the state from "Entering Colorful Colorado" to "Entering Crispy Colorado." Although Colorado does indeed have some

breath-takingly beautiful areas, Limon, located on I-70 in eastern Colorado, is known as the town you were stranded in when they closed the interstate due to winter weather conditions. It is the area you

hurry through as fast as possible to get to the mountains. The major tourist attractions in eastern Colorado are rest stops and convenience stores. Now I can totally make fun of the less fortunate; I left some very good friends in Colorado and I will always appreciate the time I spent there.

I was recently visiting with another newcomer to eastern Oklahoma and he made a statement that, although quite ordinary, is also profound. Longtime residents of this area take it for granted. Many do not realize

what a great area this is and all it has to offer. Beautiful trees, lush vegetation, abundant wildlife and water, and friendly people do not exist in all parts of this great country. Trust me; I have seen enough of the western part of the United States to be truly thankful to be in Oklahoma. I realize we have a few minor inconveniences such as tornados, snakes, scorpions, and tarantulas but these are far overshadowed by all the good things.

So the next time things aren't going exactly as you want and life seems to be throwing you a lot of curves, take a minute and think about what a wonderful area we live in and all that we have to be thankful for.



## THE LAMP

### INDIAN ELECTRIC COOPERATIVE, INC.

#### Office Hours

7:30 a.m. – 4:00 p.m. (Monday - Friday)  
(918) 358-2514  
www.iecok.com

#### To Report an Outage

(918) 358-2514 or 1-800-482-2750

#### 24-hour Service Center

(918) 295-9520

#### Board of Trustees

|                                   |            |
|-----------------------------------|------------|
| Wanda Foster, President           | District 5 |
| Loris Peckenpaugh, Vice-President | District 6 |
| Berry Keeler, Sec.-Treas.         | District 9 |
| Robert Burk                       | District 1 |
| Mike Spradling                    | District 2 |
| J.W. Perry                        | District 3 |
| Leon Day                          | District 4 |
| Bill Boone                        | District 7 |
| Greg Fielding                     | District 8 |
| Gary Moore                        | District 8 |
| Rock Reese                        | District 9 |

Jack Clinkscale

General Manager

The Lamp (USPS 942-940) is published monthly by Indian Electric Cooperative, Inc., P.O. Box 49, Highway 64 Southeast, Cleveland, Oklahoma 74020 for the interest of its membership. Subscription price was \$0.17 per month in 2002. Periodical postage paid at Cleveland, Oklahoma and additional mailing offices.

- Postmaster: Send address changes to The Lamp, P.O. Box 49, Cleveland, OK 74020.

# Hydro Ax Returns to Clear Right-of-Way

Keeping rights-of-way clear of trees and brush is an on-going, year-round effort. And it's one we take seriously. To help us maintain our rights-of-way in an efficient and timely fashion, we are again using Northeast Electric Cooperative's Hydro Ax to clear brush in an area from Coyote Trail south to Sapulpa Ranch, east of 209th Street.



"The Hydro Ax machine can clear eight feet in a single pass, cutting brush and trees up to 10-inches in diameter," says Roger McAllister, IEC's right-of-way supervisor.

Members living in areas served by certain feeders from the Alpine and Fisher substations received letters from McAllister in December, advising them of the right-of-way clearing efforts planned for their areas.

"We requested permission to clear a 50-foot right-of-way where applicable in and around the power lines on their property," says McAllister.

He goes on to say IEC plans to maintain the cleared right-of-way with broadleaf herbicides.

"The herbicide we apply is not toxic to man or animal and has been approved by the State of Oklahoma, the United States Department of Agriculture and the Environmental Protection Agency," McAllister says.



Rep. Joe Sweeden (second from right) meets with IEC manager, trustees and spouses.

## Trustees Take Member Concerns to Legislators During OAEC Annual Meeting

IEC member concerns and interests were topics of discussion recently, when managers and trustees from Oklahoma co-ops met with state legislators during the second day of the legislative session.

IEC General Manager Jack Clinkscale along with trustees Wanda Foster, Mike Spradling, Loris Peckenpaugh, Barry Keeler, Leon Day, and J. W. Perry attended

the Oklahoma Association of Electric Cooperatives' annual meeting in Oklahoma City prior to visiting area legislators.

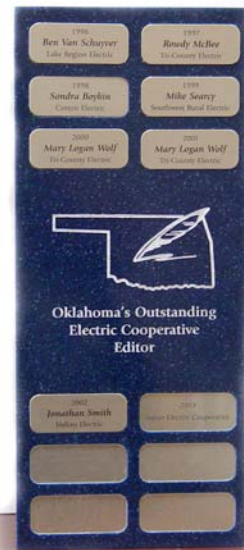
"Talking with our representatives about legislation that will affect our members or the cooperative is one of a trustee's most important responsibilities," says Wanda Foster, president of IEC's Board of Trustees.

## "The Lamp" Wins Competition's Highest Award

IEC's monthly newsletter "The Lamp" received the highest recognition given during the Oklahoma Association of Electric Cooperatives' (OAEC) newsletter competition. The award was presented during OAEC's recent annual meeting.

"The Lamp" was recognized with Awards of Excellence for best annual report, best layout and design, and best newsletter photo. IEC's Web site was recognized with an Award of Merit.

Editor Kay Rabbitt-Brower shares the award with The Lamp staff, Don Lawrence, Clara Eulert, Cyndie Wood, David Wilson, and former editor Jonathan Smith.



# RECIPE



## Apple Pork Chops

1/4 cup all-purpose flour  
1/2 tsp. salt  
1/2 tsp. paprika  
1/2 tsp. white pepper  
6 (1/2-inch-thick) pork chops

1/4 cup vegetable oil  
2 medium-size cooking apples  
2 cups apple juice, divided  
3 Tbsps. brown sugar  
1/2 tsp. ground allspice

Combine first 4 ingredients in a shallow bowl; dredge pork chops in mixture. Reserve remaining flour mixture. Brown pork chops in oil in a large skillet. Arrange chops in a 13-x 9-x 2-inch baking dish. Core unpeeled apples, and cut into rings; place on chops. Pour 1 and 1/2 cups apple juice over apples. Combine sugar and allspice; sprinkle over apples. Bake, uncovered, at 325° for 1 hour or until chops are tender. Remove pork chops and apple slices to a serving platter, reserving pan drippings. Dissolve 1 and 1/2 tablespoons remaining flour mixture in remaining 1/2 cup apple juice. Combine flour mixture and pan drippings in a saucepan; cook over medium heat until thickened, stirring constantly. Serve sauce over pork chops. YIELD: 6 servings.

## Youth Tour, Energy Camp Essays Due in March

If you are a high school junior participating in IEC's Youth Tour competition, or an 8th grader participating in our Energy Camp competition, don't forget the deadlines to submit your essays.

Youth Tour essays are due by noon, Monday, March 8. Energy Camp essays are due Friday, March 12 at noon. All essays need to be submitted to Clara Eulert at IEC headquarters in Cleveland.

Eulert says students will receive notification about the four finalists in late March. The Youth Tour banquet will be held in April.

If you have questions about these programs, call Eulert at (918) 358-2514.

## We Need Your Number

"In an effort to keep our information up to date, we're asking members to provide us with their current telephone numbers," says

Rick Davis, IEC's manager of operations.

"The numbers will be kept confidential," Davis says. "We need up-to-date information if we

should have to notify members of planned outages, or check to see if power has been restored following an outage."

Davis says space will be provided for members to write in their phone number on the portion of the electric bill they return with their payment.



## Thank You

Fairfax linemen Dennis Warren and Max Womack think Fairfax resident Marilyn Mills is a sweetheart. She brought them each a box of assorted cookies from Tulsa's Merritt Bakery to thank them for restoring her electric service following an outage in January.

Warren and Womack said it certainly wasn't necessary for Mills to bring them the cookies, but they truly appreciate it. And the cookies were great.

## Find 'The Magic of Spring' at Tulsa Home & Garden Show

Don't forget to drop by the Green Country Electric Co-op booth at the Greater Tulsa Home & Garden Show, March 11-14 at the Expo Center on the Tulsa Fairgrounds. 'The Magic of Spring' is the theme of this year's show.

Representatives from Indian Electric and five other Green Country co-ops will be on hand to visit with you about co-op

programs and energy efficiency technology, along with handing out small hard hats for the youngsters and stress balls for the adults.

The first 500 people attending the show each day will receive a sapling donated by the Green Country co-ops.

Tickets are \$7 for adults and can be purchased at the door.